



MONTHLY MEMBERSHIP PROGRESS REPORT

District 2 E1

Results as of: 5/31/2017

GMT: HAL GRIFFIN

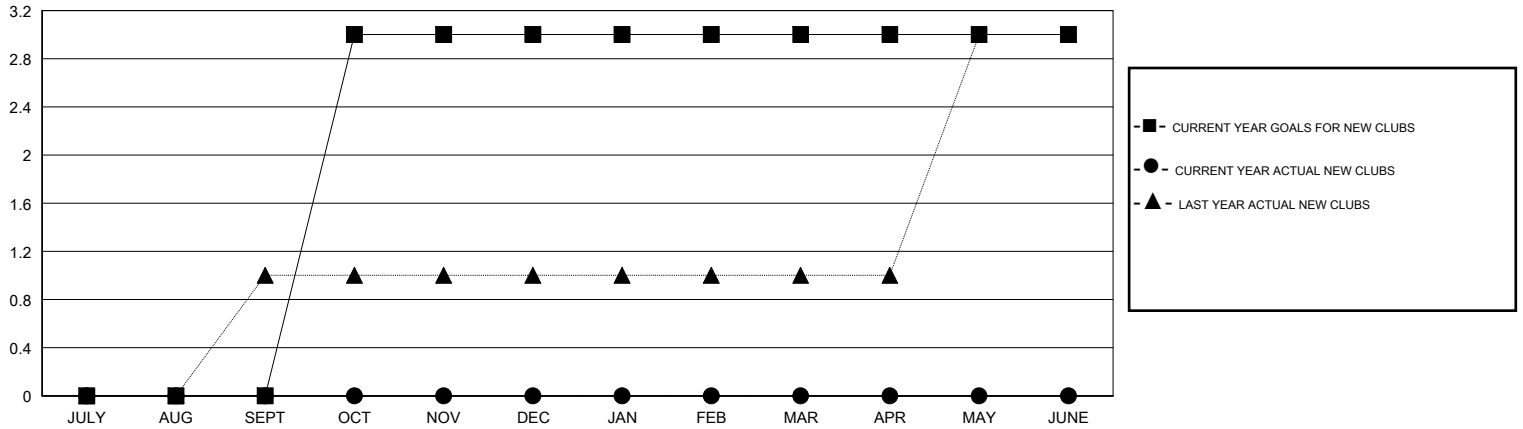
LOCATION TEXAS

GMT CA

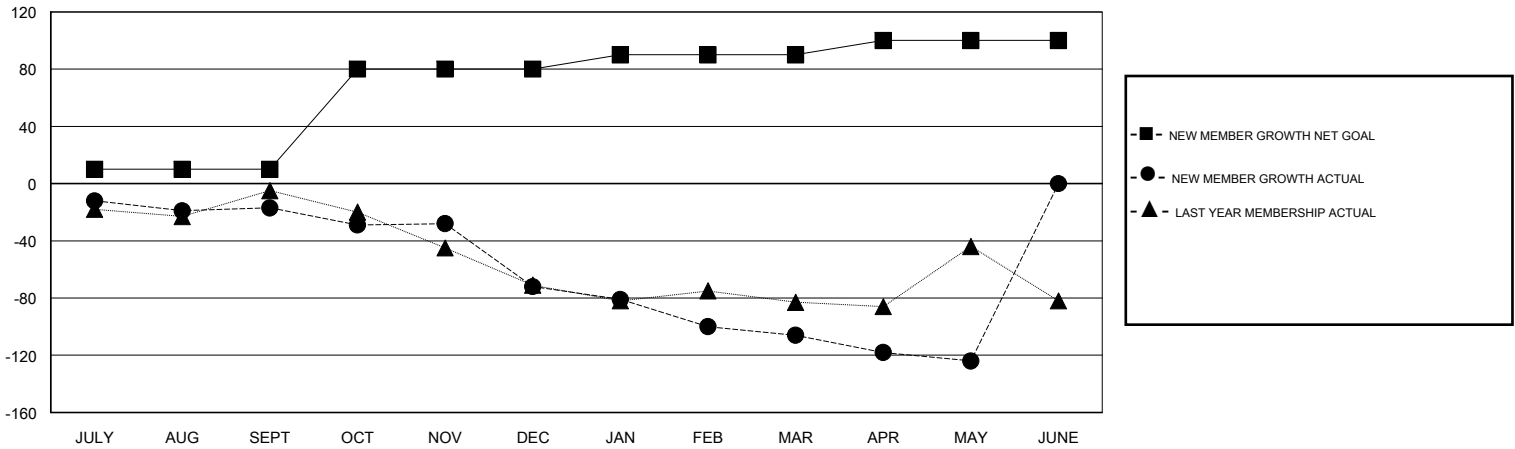
Clubs			
RESULTS FOR 2016-2017			
QUARTER	NEW CLUB GOAL	NEW CLUBS	DROPPED CLUBS
JULY/AUG/SEPT	0	0	1
OCT/NOV/DEC	3	0	1
JAN/FEB/MAR	0	0	0
APR/MAY/JUNE	0	0	0

Members			
RESULTS FOR 2016-2017			
QUARTER	NEW MEMBER GROWTH NET GOAL (not reinstated or transfers)	NEW MEMBER GROWTH ACTUAL (not reinstated or transfers)	DROPPED MEMBERS ACTUAL (including transfers)
JULY/AUG/SEPT	10	24	41
OCT/NOV/DEC	70	24	79
JAN/FEB/MAR	10	37	71
APR/MAY/JUNE	10	19	37

GOALS AND ACTUAL NEW CLUBS CUMULATIVE



GOALS AND ACTUAL MEMBERS CUMULATIVE



DROPPED CLUBS: 2	33 CLUBS OF 55 ADDED 1 OR MORE NEW MEMBERS	<u>GENDER DISTRIBUTION</u>	
DROPPED MEMBERS		MALE	856 (73.35%)
DECEASED	19	FEMALE	311 (26.65%)
CLUB CANCELLED	20	TOTAL FAMILY UNIT MEMBERS	
OTHER	189	105	
TOTAL	228	FAMILY MEMBERS PAYING HALF DUES	
		53	

[CLICK HERE FOR CUMULATIVE MEMBERSHIP DATA](#)